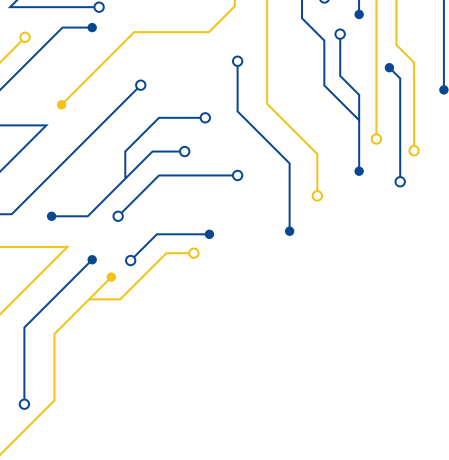


## CUSTOMIZABLE PANEL PC

MECHANICAL	
CONSTRUCTION	Aluminium Front Bezel with customizable front
MOUNTING	Panel Mount
DIMENSIONS (mm)	410 x 255 x 94.5
NET WEIGHT (kg)	7 kg
IP RATING	IP65
CERTIFICATE	CE
ENVIRONMENT	
OPERATING TEMPERATURE	0 ~ 50° C
STORAGE TEMPERATURE	-30 ~ 70° C
STORAGE HUMIDITY	10 ~ 90 % non-condensing
INQUIRY CODES	
WPC-716-S8	15.6", 1366x768, Intel® Core™, IP65, RST, 110-230V AC, 400 cd/m2
WPC-716F-S8	15.6", 1920x1080, Intel® Core™, IP65, RST, 110-230V AC, 500 cd/m2
NOTE	RAM and Storage capacity must be specified in the inquiry

MODEL	WPC-716-S8	
SYSTEM		
CPU	8/9th Gen. Intel® Core™ (Coffee Lake-S), 35W i3-8100T, 3.1GHz   i5-8500T, 2.1GHz   i7-8700T, 2.4GHz	
SYSTEM CHIPSET	Intel® H310	
MEMORY	2x 260-pin SO-DIMM Dual Channel DDR4 2666 MHz, max. 64GB	
OPERATING SYSTEM	Windows 10®	
GRAPHICS	Intel® Coffee Lake integrated graphics, Dual Display	
INTERFACE PORTS		
LAN	2x GbE RJ45 (1x Intel i210, 1x Intel i219V) with 10/100/1000 Mbps	
SERIAL	3x COM (RS232), 1x COM (RS232/422/485)	
USB	4x USB 3.1 (Gen1), 4x USB 2.0	
VIDEO	1x VGA, 2x DP 1.2, 1x LVDS	
GPIO	4x GPI + 4x GPO	
AUDIO	2x Audio (Mic-in/Line-Out), 1x Speaker Header	
STORAGE		
M.2	1x M.2 (Key M, 2242/2260/2280) with SATA3 for SSD	
SATA	4x SATA3 (6Gb/s)	
EXPANSIONS		
PCIe	1x PCIe x16 (Gen3)	
Mini-PCIe	1x Full/Half-size with PCIe x1 and USB 2.0	
M.2	1x M.2 (Key E, 2230) with PCIe x1, USB 2.0 and CNVi for Wireless	
DISPLAY		
DISPLAY TYPE	15.6" TFT-LCD 16:9	
MAX RESOLUTION	1366 x 768	1920 x 1080 (F)
MAX COLOR	16.7M	
BRIGHTNESS (cd/m²)	400	500
VIEW ANGLE (H°/V°)	85/80	
CONTRAST	500:1	1000:1
TOUCHSCREEN		
TYPE	Resistive (R)	
INTERFACE	USB	
LIGHT TRANSMISSION	Resistive: 80%	
POWER		
POWER INPUT	110 ~ 230V AC - 47/63Hz	
POWER CONSUMPTION	270W	
POWER PORTS	1x Power ON/OFF button, 1x 4-pin DC-in jack	



## **WPC-716-S8**

